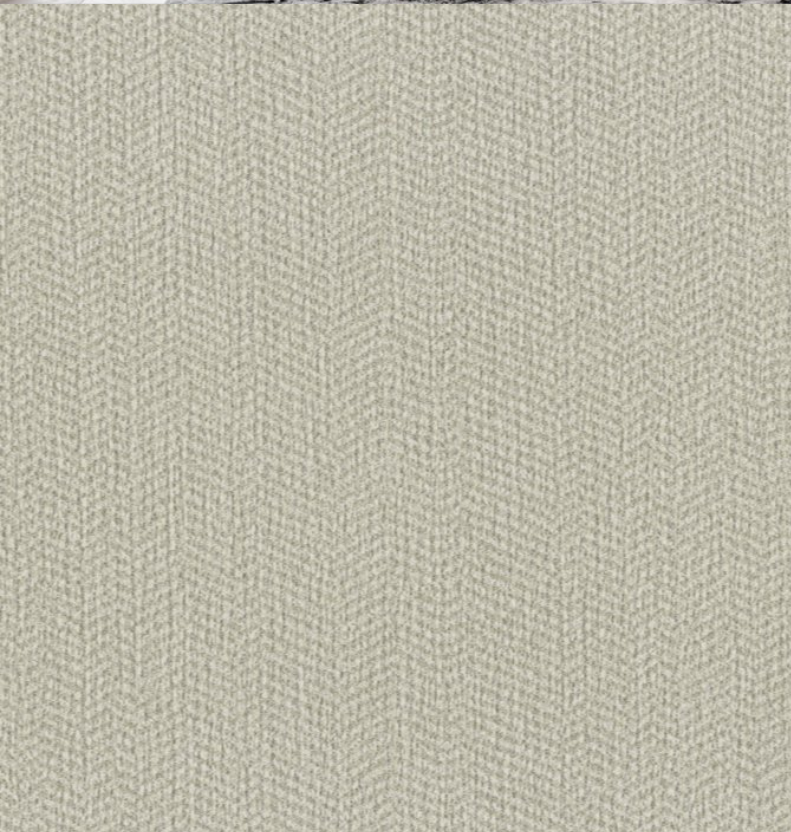


The new Tweed wallcovering has been designed to offer beautiful styling in authentic colours. Featuring a delicate tweed print and then matched with a natural fabric texture, this 20oz Type II Osnaburg design offers a contemporary look whilst a neutral colour scheme gives an elegant finish.



### Product Details

<b>Design:</b>	Tweed
<b>SKU:</b>	12388
<b>Colour Description:</b>	Cream
<b>Width:</b>	130cm
<b>Length:</b>	30m
<b>Sold By:</b>	Per linear metre
<b>Construction Type:</b>	Fabric backed Vinyl
<b>Backer:</b>	Osnaburg
<b>Weight:</b>	455gsm
<b>Fire rating:</b>	Euro Class B-s2, d0

**CLEANABILITY**



Extra Scrubbable

**IMO RATED**



BV0062

**LIGHTFASTNESS**



Very good,  
(6 out of 8 to  
BSEN20105)

**VOC RATED**

**A+**

**CE COMPLIANT**



**CONTAINS BIOCIDES**



**ANTI-BACTERIAL**



### Hanging Information

<b>Pattern Repeat:</b>	0cm
<b>Pattern Offset:</b>	0cm
<b>Pattern Overlap:</b>	5cm
<b>Recommended Adhesive:</b>	Tools: Hard Spatula and Joint Cutter. Adhesive: Murabond Heavy. On dry lining use Murabond Easy Strip. On sealed surfaces use Murabond Sealed Surface Adhesive

**AVAILABLE COLOURWAYS IN THIS DESIGN**

To view the full range of colourways available in this design, please search 'Tweed' using the search function tool on the Muraspec website.



OVERLAP & TRIM



BY REVERSE HANGING



RANDOM MATCH



PASTE TO WALL