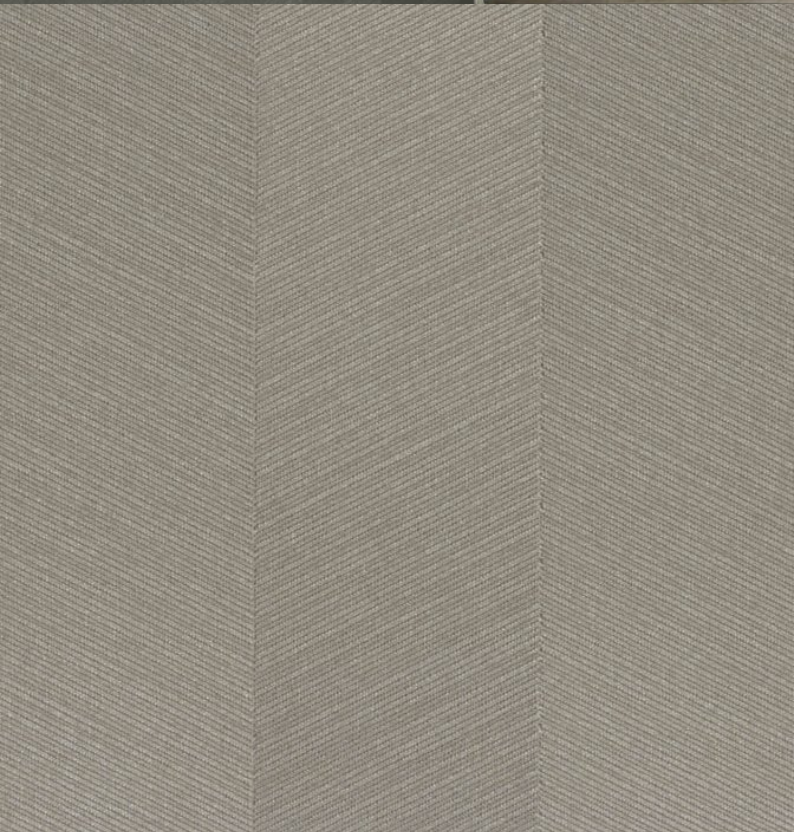


Reminiscent of the traditional weaving pattern found in twill fabric, 'Herringbone' began as a unique hand-created artwork and then has been made as a sumptuous textured 20oz Type II Osnaburg wallcovering. Its large chevron shaped pattern and zigzag formation beautifully linked with silky metallic and mica accents, offer a truly decadent interior statement stripe. This sophisticated and opulent design is available in 13 colours including: luxurious mica's, rich navy blue and a wide choice of glorious pewters, taupe's, cool mint green, bronze and a warm heather.



### Product Details

<b>Design:</b>	Herringbone
<b>SKU:</b>	12319
<b>Colour Description:</b>	Taupe
<b>Width:</b>	130cm
<b>Length:</b>	30m
<b>Sold By:</b>	Per linear metre
<b>Construction Type:</b>	Fabric backed Vinyl
<b>Backer:</b>	Osnaburg
<b>Weight:</b>	455gsm
<b>Fire rating:</b>	Euro Class B-s2, d0

**CLEANABILITY**



Extra Scrubbable

**IMO RATED**



BV0062

**LIGHTFASTNESS**



Very good.  
(6 out of 8 to BSEN20105)

**VOC RATED**

**A+**

**CE COMPLIANT**



**CONTAINS BIOCIDES**



### Hanging Information

<b>Pattern Repeat:</b>	0cm
<b>Pattern Offset:</b>	0cm
<b>Pattern Overlap:</b>	7.5cm
<b>Recommended Adhesive:</b>	Tools: Hard Spatula and Joint Cutter. Adhesive: Murabond Heavy. On dry lining use Murabond Easy Strip. On sealed surfaces use Murabond Sealed Surface Adhesive

**AVAILABLE COLOURWAYS IN THIS DESIGN**

To view the full range of colourways available in this design, please search 'Herringbone' using the search function tool on the Muraspec website.



OVERLAP & TRIM



BY STRAIGHT HANGING



STRAIGHT MATCH



PASTE TO WALL