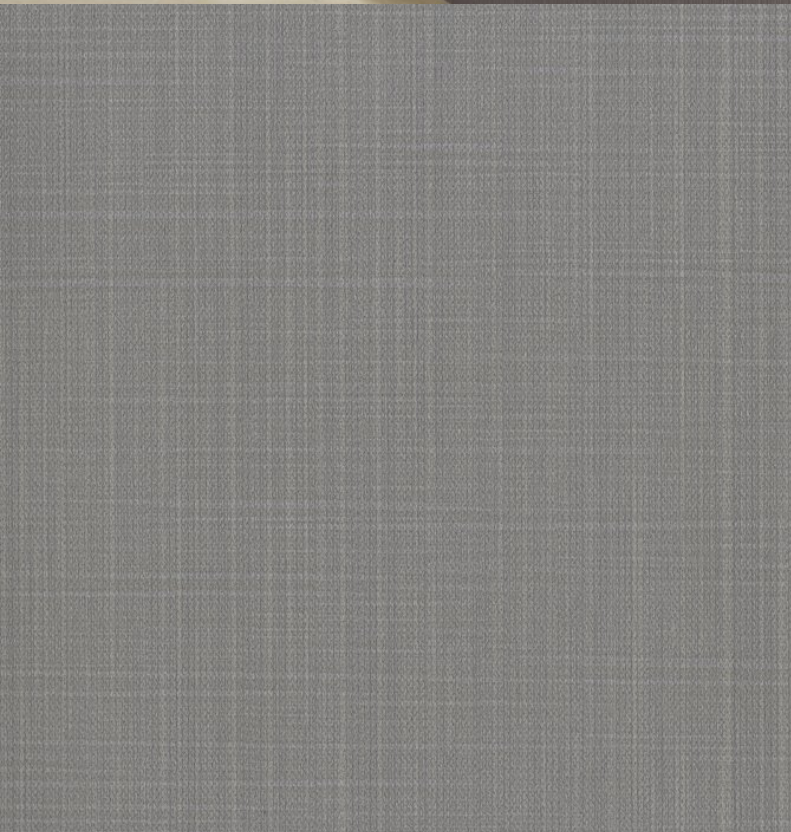
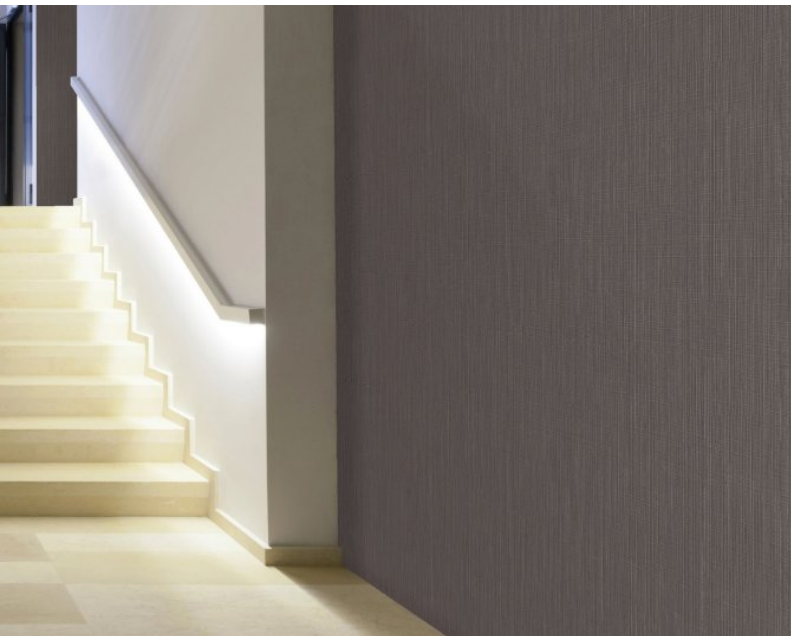


Anafi is a decorative polyester backed, foam vinyl wallcovering providing acoustic sound absorption benefits for your walls. For interiors that are looking to minimise sound reverberation, Anafi is recommended for walls in a wide variety of interiors including offices, hospitals, clinics, retirement homes, hotels, restaurants and theatres. This product uses water based inks for the 20 colourways available, absorbs sound with a coefficient of 0.4 at 3300Hz – $\alpha_w = 0.15$, has Euroclass C S3 D0 certification and has achieved a Class A pass for the ASTM E84 fire rating certification.



Product Details

| | |
|----------------------------|---------------------------|
| Design: | Anafi |
| SKU: | BM-61527627 |
| Colour Description: | Grey |
| Width: | 130cm |
| Length: | 30m |
| Sold By: | Per linear metre |
| Construction Type: | Non-woven backed Acoustic |
| Backer: | Non Woven Polyester |
| Weight: | 580gsm |
| Fire rating: | Euro Class C-s3,d0 |

CLEANABILITY



Washable

LIGHTFASTNESS



Good.
(5 out of 8 to BSEN20105)

VOC RATED

A+

CE COMPLIANT

CE

Hanging Information

| | |
|------------------------------|---|
| Pattern Repeat: | 0cm |
| Pattern Offset: | 0cm |
| Pattern Overlap: | 5cm |
| Recommended Adhesive: | Tools: Hard Spatula and Joint Cutter. Adhesive: Murabond Heavy. On dry lining use Murabond Easy Strip. On sealed surfaces use Murabond Sealed Surface Adhesive |

AVAILABLE COLOURWAYS IN THIS DESIGN

To view the full range of colourways available in this design, please search 'Anafi' using the search function tool on the Muraspec website.



OVERLAP & TRIM



BY REVERSE HANGING



RANDOM MATCH



PASTE TO WALL