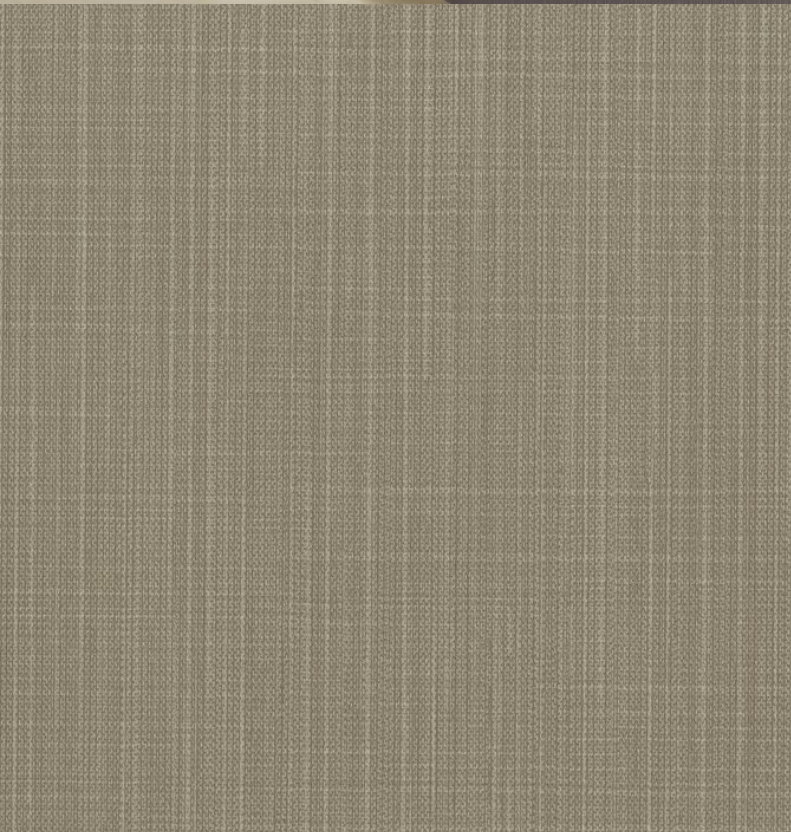
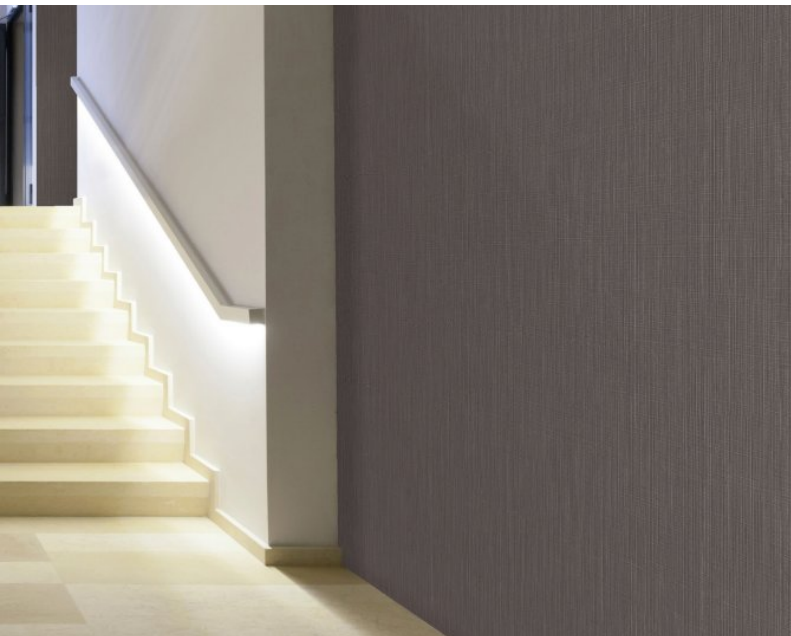


Anafi is a decorative polyester backed, foam vinyl wallcovering providing acoustic sound absorption benefits for your walls. For interiors that are looking to minimise sound reverberation, Anafi is recommended for walls in a wide variety of interiors including offices, hospitals, clinics, retirement homes, hotels, restaurants and theatres. This product uses water based inks for the 20 colourways available, absorbs sound with a coefficient of 0.4 at 3300Hz –  $\alpha_w = 0.15$ , has Euroclass C S3 D0 certification and has achieved a Class A pass for the ASTM E84 fire rating certification.



### Product Details

|                            |                           |
|----------------------------|---------------------------|
| <b>Design:</b>             | Anafi                     |
| <b>SKU:</b>                | BM-61527621               |
| <b>Colour Description:</b> | Brown                     |
| <b>Width:</b>              | 130cm                     |
| <b>Length:</b>             | 30m                       |
| <b>Sold By:</b>            | Per linear metre          |
| <b>Construction Type:</b>  | Non-woven backed Acoustic |
| <b>Backer:</b>             | Non Woven Polyester       |
| <b>Weight:</b>             | 580gsm                    |
| <b>Fire rating:</b>        | Euro Class C-s3,d0        |

#### CLEANABILITY



Washable

#### LIGHTFASTNESS



Good.  
(5 out of 8 to BSEN20105)

#### VOC RATED

**A+**

#### CE COMPLIANT

**CE**

### Hanging Information

|                              |   |
|------------------------------|---|
| <b>Pattern Repeat:</b>       | 0cm   |
| <b>Pattern Offset:</b>       | 0cm   |
| <b>Pattern Overlap:</b>      | 5cm   |
| <b>Recommended Adhesive:</b> | Tools: Hard Spatula and Joint Cutter.<br>Adhesive: Murabond Heavy. On dry lining use Murabond Easy Strip. On sealed surfaces use Murabond Sealed Surface Adhesive |

#### AVAILABLE COLOURWAYS IN THIS DESIGN

To view the full range of colourways available in this design, please search 'Anafi' using the search function tool on the Muraspec website.



OVERLAP & TRIM



BY REVERSE HANGING



RANDOM MATCH



PASTE TO WALL