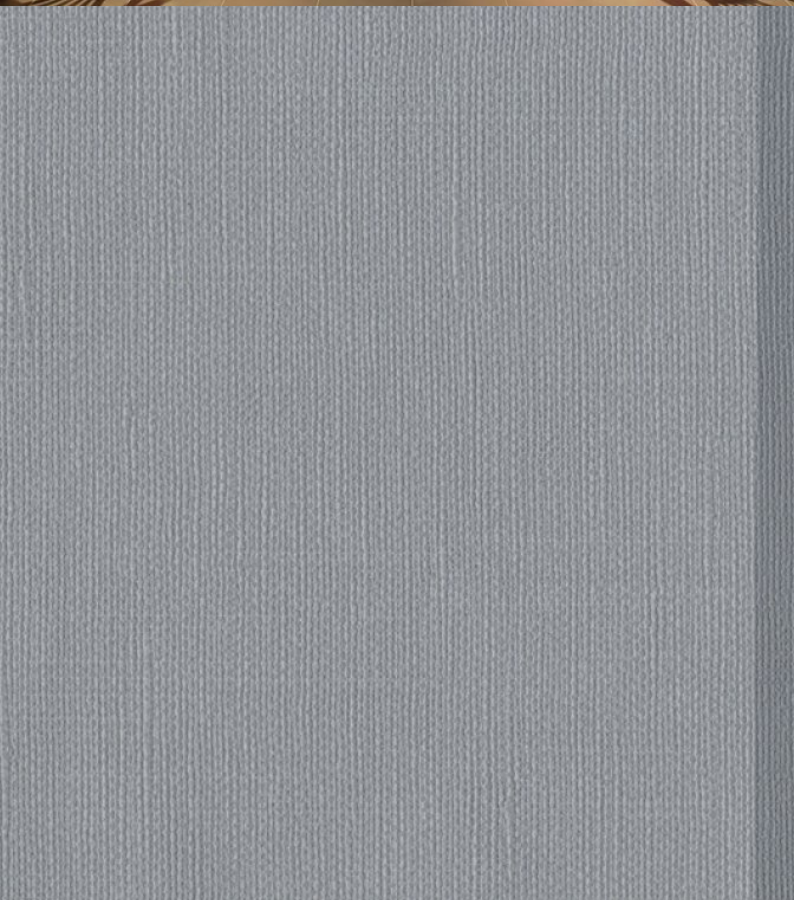


For further information please contact customer services on 03705 117 118.



Product Details

Design:	Palma Stripe
SKU:	01S91
Colour Description:	Blue
Width:	130 cm
Length:	30 m
Sold By:	Per linear metre
Construction Type:	Fabric backed Vinyl
Backer:	Cotton Scrim
Weight:	410gsm Type I (18oz)
Fire rating:	Euro Class B-s2,d0 Other Fire Certifications available include Russian GOST, Australian AS 5637.1, Chinese 8624

CLEANABILITY



Extra Scrubbable

IMO RATED



Yes

LIGHTFASTNESS



Very good.
(6 out of 8 to BSEN20105)

VOC RATED

A+

CE COMPLIANT



CONTAINS BIOCIDES



Hanging Information

Pattern Repeat:	0cm
Pattern Offset:	0cm
Pattern Overlap:	16cm
Recommended Adhesive:	Murabond Heavy. On dry lining use Murabond Easy Strip. On sealed surfaces use Murabond Sealed Surface Adhesive. For other surfaces contact Customer Services on 03705 117 118.

AVAILABLE COLOURWAYS IN THIS DESIGN

To view the full range of colourways available in this design, please search 'Palma Stripe' using the search function tool on the Muraspec website.



OVERLAP & TRIM



BY REVERSE HANGING



RANDOM MATCH



PASTE TO WALL