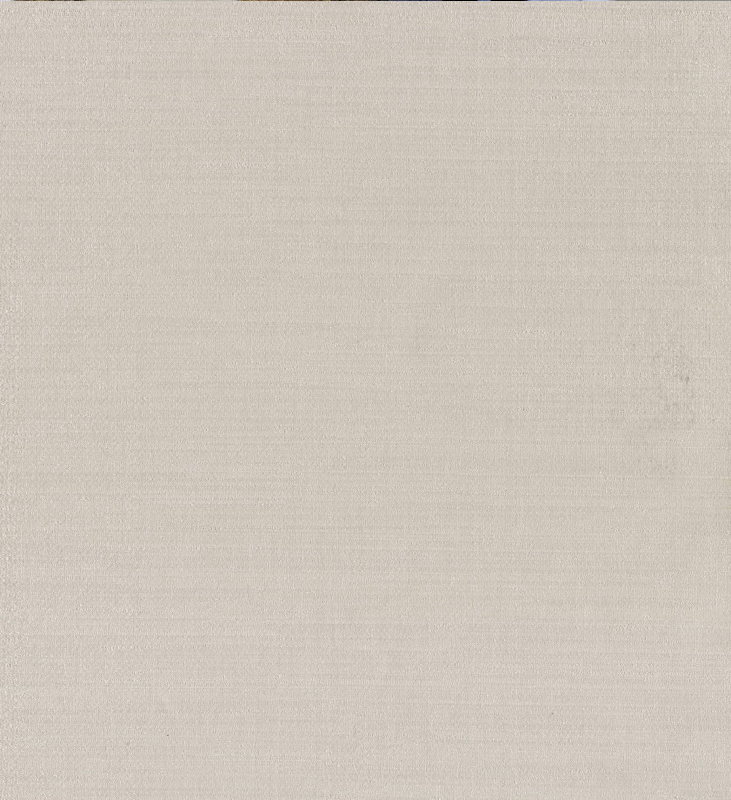


Named after the Karakash River passing east of Khotan, along the Silk Road Trail, the Karakash design reflects the beautifully luxurious essence of natural silks. A serene palette of classic satin hues together with a refined horizontal "fine silk" texture brings style, shine and our unique flair to any space. This perfectly pearlescent wallcovering is versatile enough for any home, hotel or commercial design scheme. This product has a natural characteristic panelled effect once installed, and so is not seamless



Product Details

Design:	Karakash
SKU:	11073
Colour Description:	Taupe
Width:	130 cm
Length:	30 m
Sold By:	per linear metre
Construction Type:	Fabric backed Vinyl
Backer:	Cotton Scrim
Weight:	360gsm Type I (15oz)
Fire rating:	Euro Class B-s1,d0 Other Fire Certifications available include Russian GOST, Australian AS 5637.1, Chinese 8624

CLEANABILITY



Fully Washable

CE COMPLIANT



CONTAINS BIOCIDES



IMO RATED



BV2690

IMO RATED



8517

LIGHTFASTNESS



Very good. (6 out of 8
to BSEN20105)

VOC RATED

A+

Hanging Information

Pattern Repeat:	0cm
Pattern Offset:	0cm
Pattern Overlap:	5cm
Recommended Adhesive:	Murabond Heavy. On dry lining use Murabond Easy Strip. On sealed surfaces use Murabond Sealed Surface Adhesive. For other surfaces contact Customer Services on 03705 117 118.



Paste to wall



By Reverse Hanging



Random Match



Overlap & Trim

AVAILABLE COLOURWAYS IN THIS DESIGN

To view the full range of colourways available in this design, please search '[Karakash](#)' using the search function tool on the Muraspec website.

If you require further information about any Muraspec product or service please search our website www.muraspec.com, contact us at customerservices@murasespec.com or call +44 (0)3705 117 118